

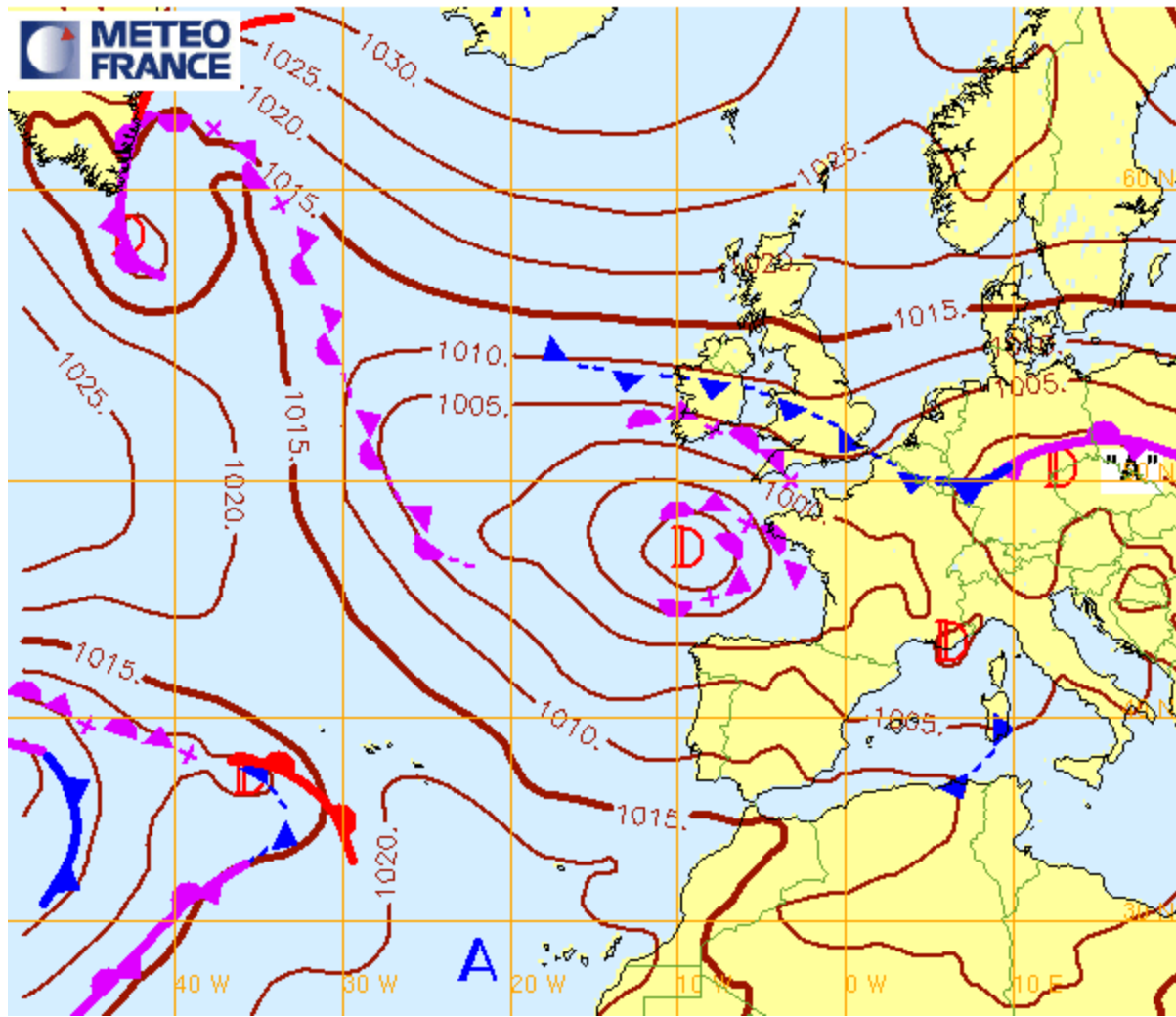
DEBRIEF

DIMANCHE 11 MARS 2013

- SE 10/12nds
- Ciel straté en basse couche (front occlus)
- Une masse sombre (pluvieuse) noyée dans la masse arrive vers 17H sur le capteur de Belle Ile à la pointe du Talut
 - => Droite et renforcement du vent



Analyse Fronts et isobares du 10/03/2013 12hUTC (reseau: 10/03/2013 12hUTC)

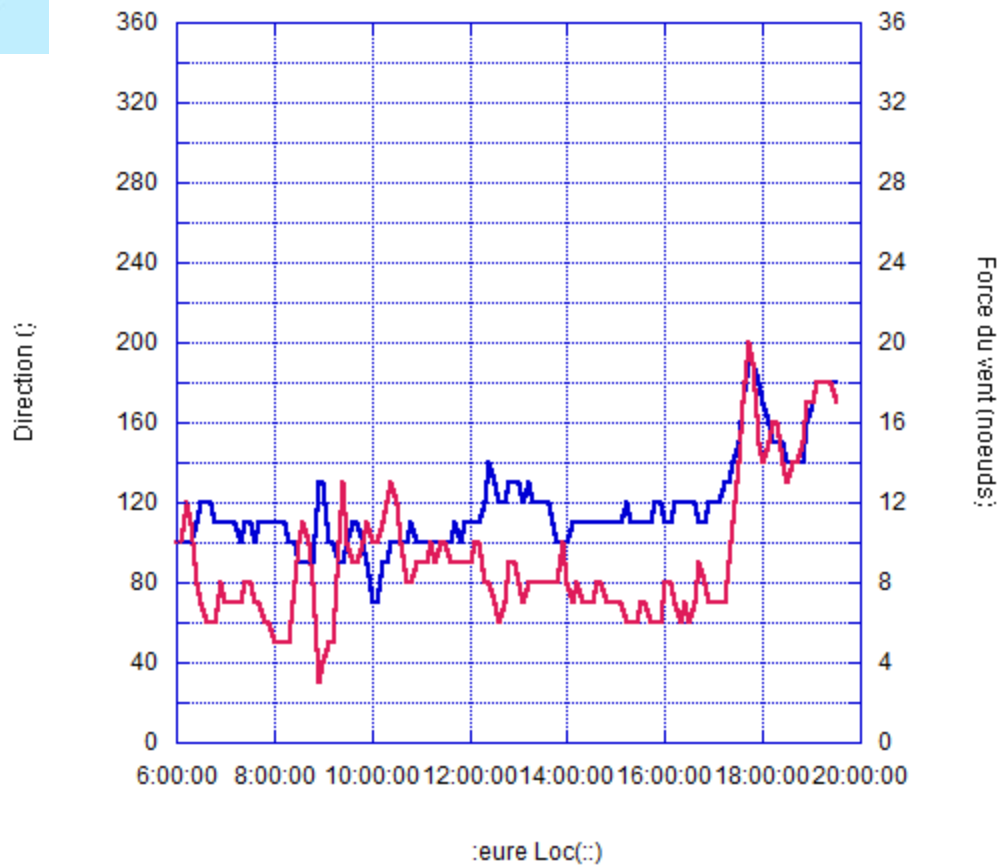




— Direction (°)

— Force du vent (nœuds)

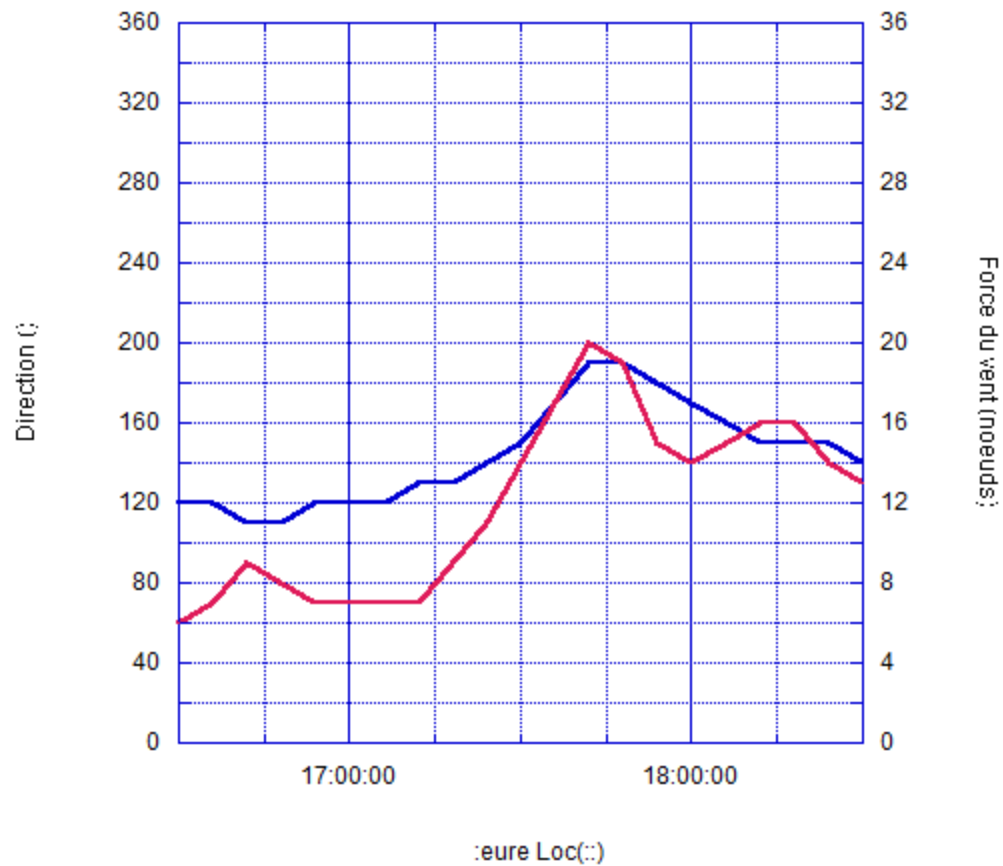
20130310BI



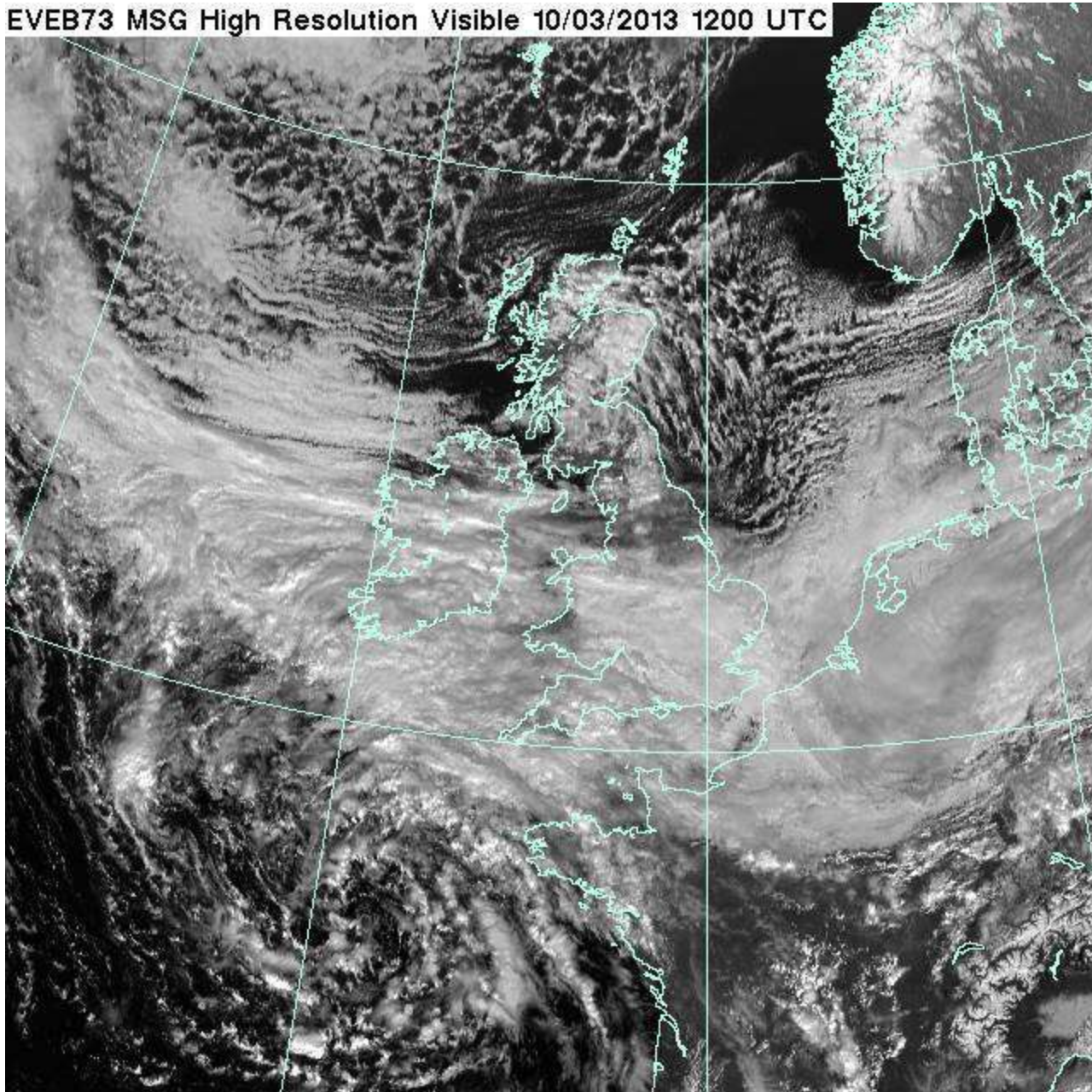
— Direction (°)

— Force du vent (nœuds)

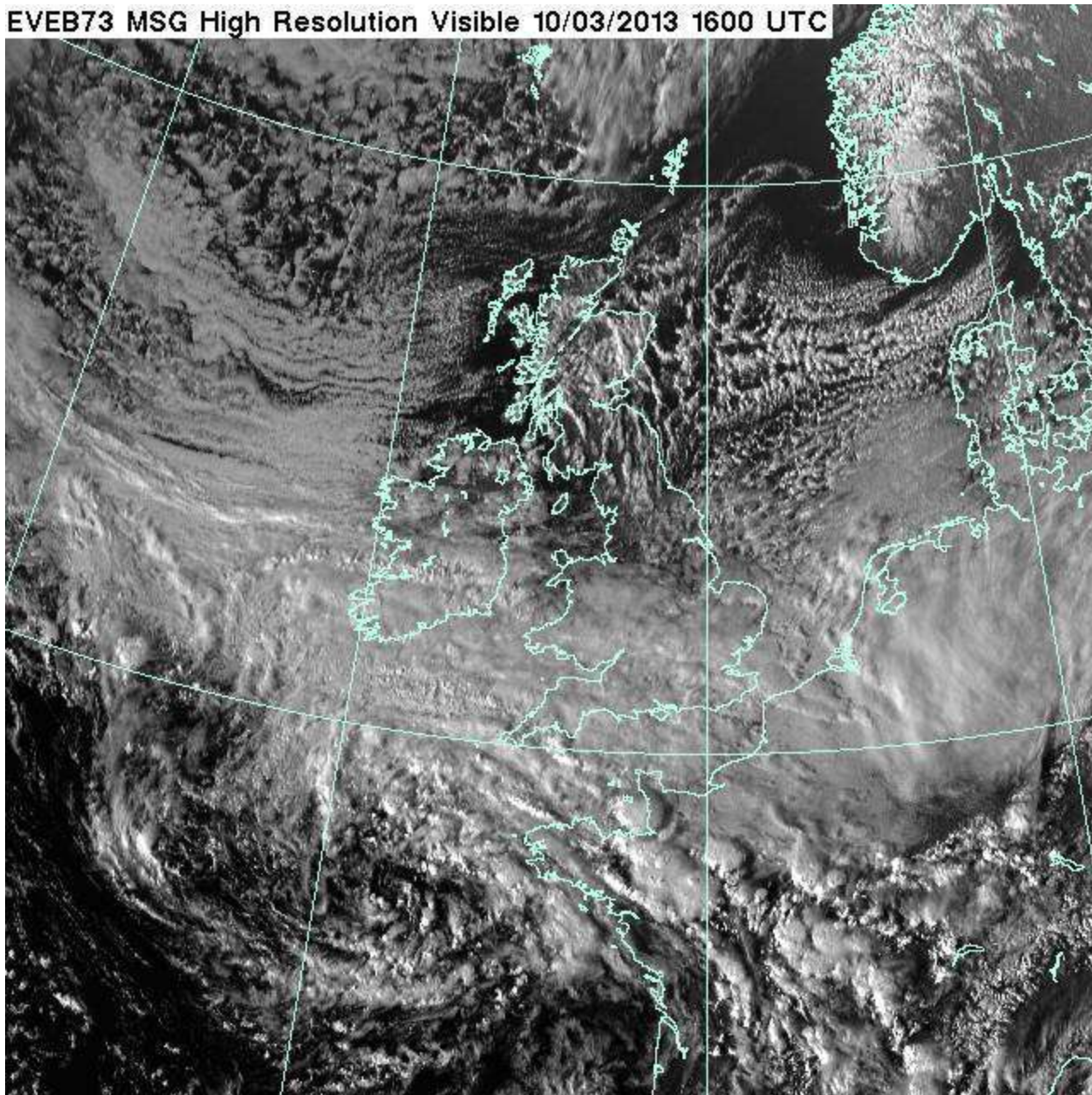
20130310BI

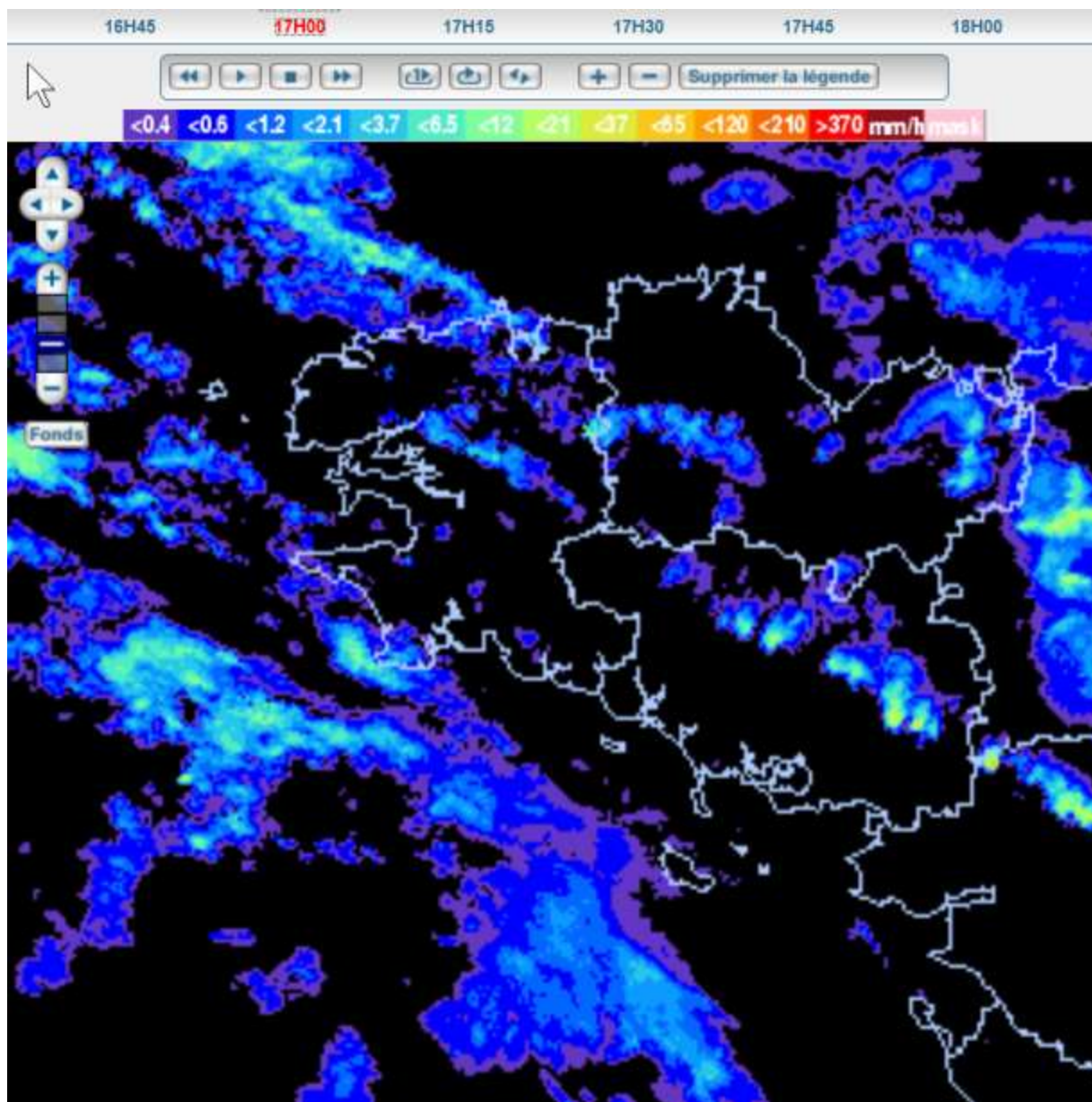


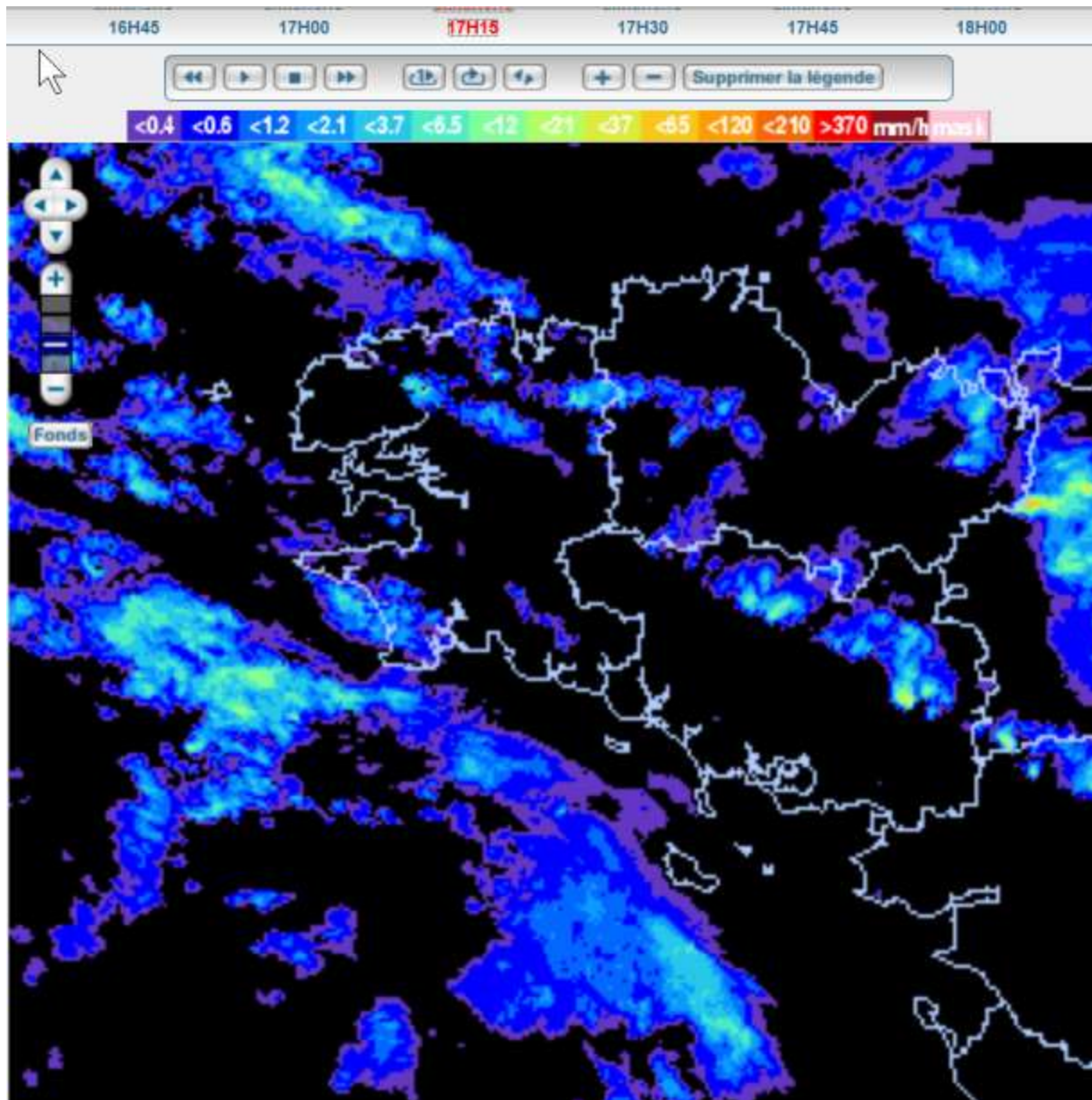
EVEB73 MSG High Resolution Visible 10/03/2013 1200 UTC

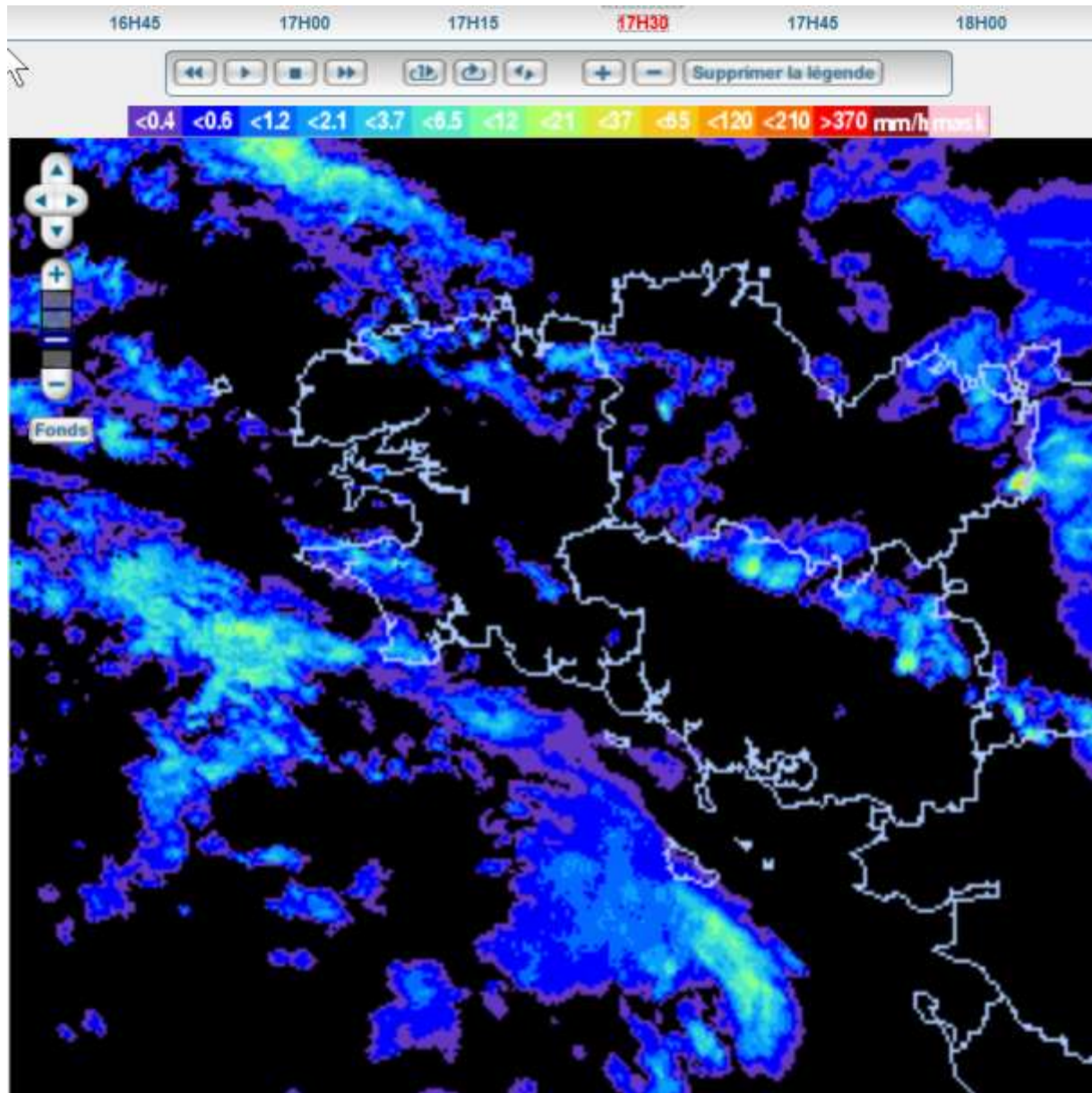


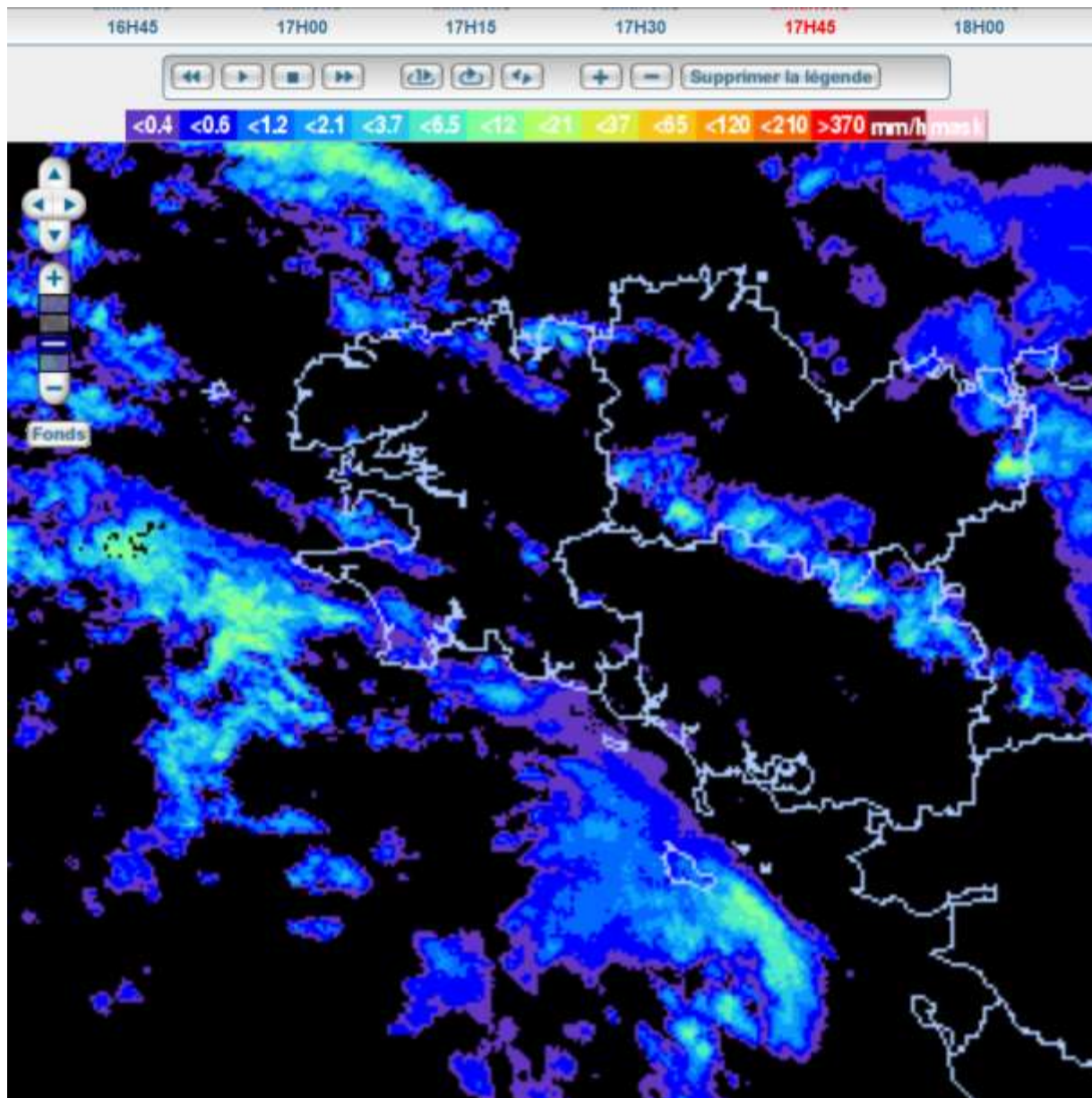
EVEB73 MSG High Resolution Visible 10/03/2013 1600 UTC

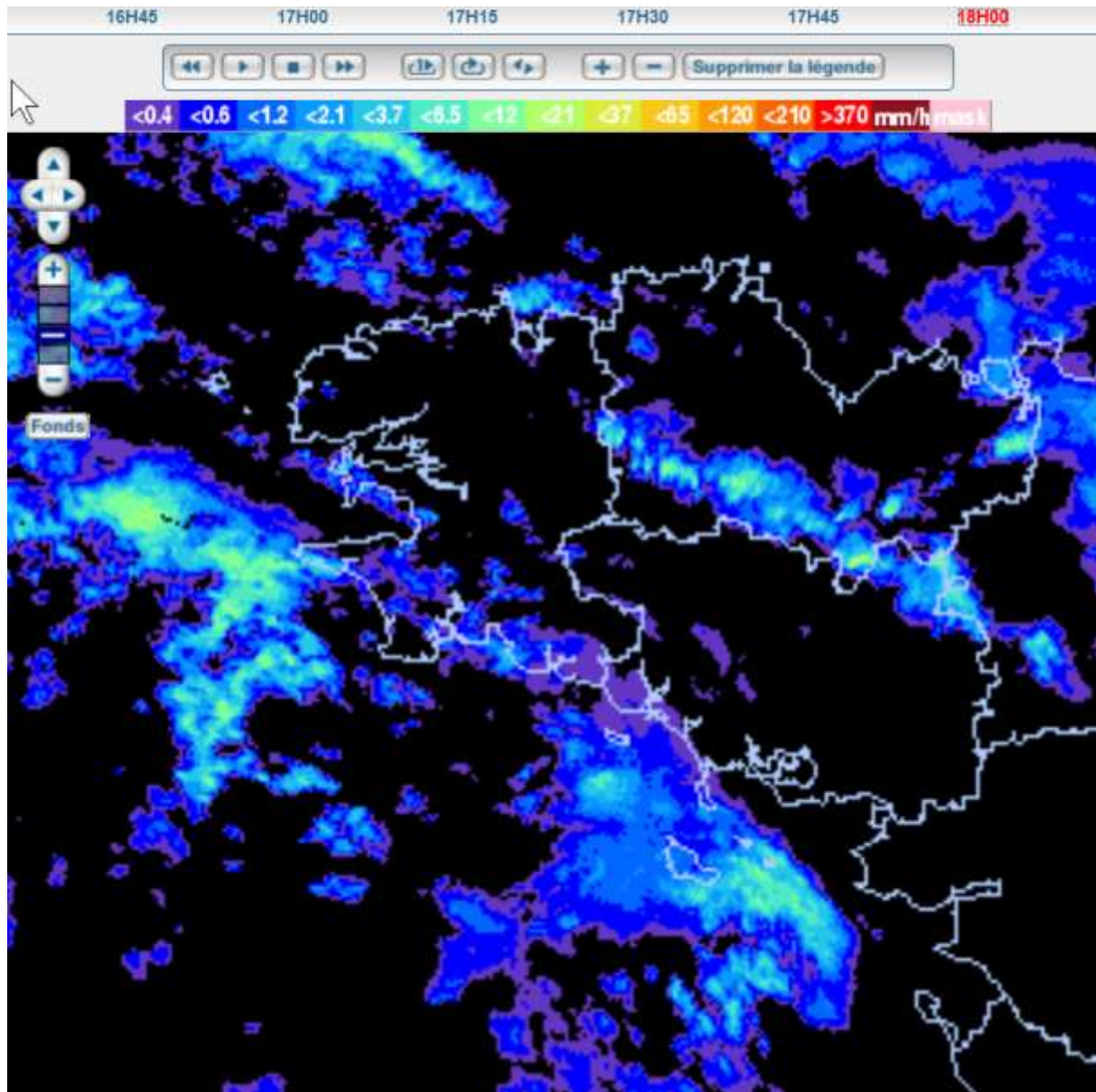


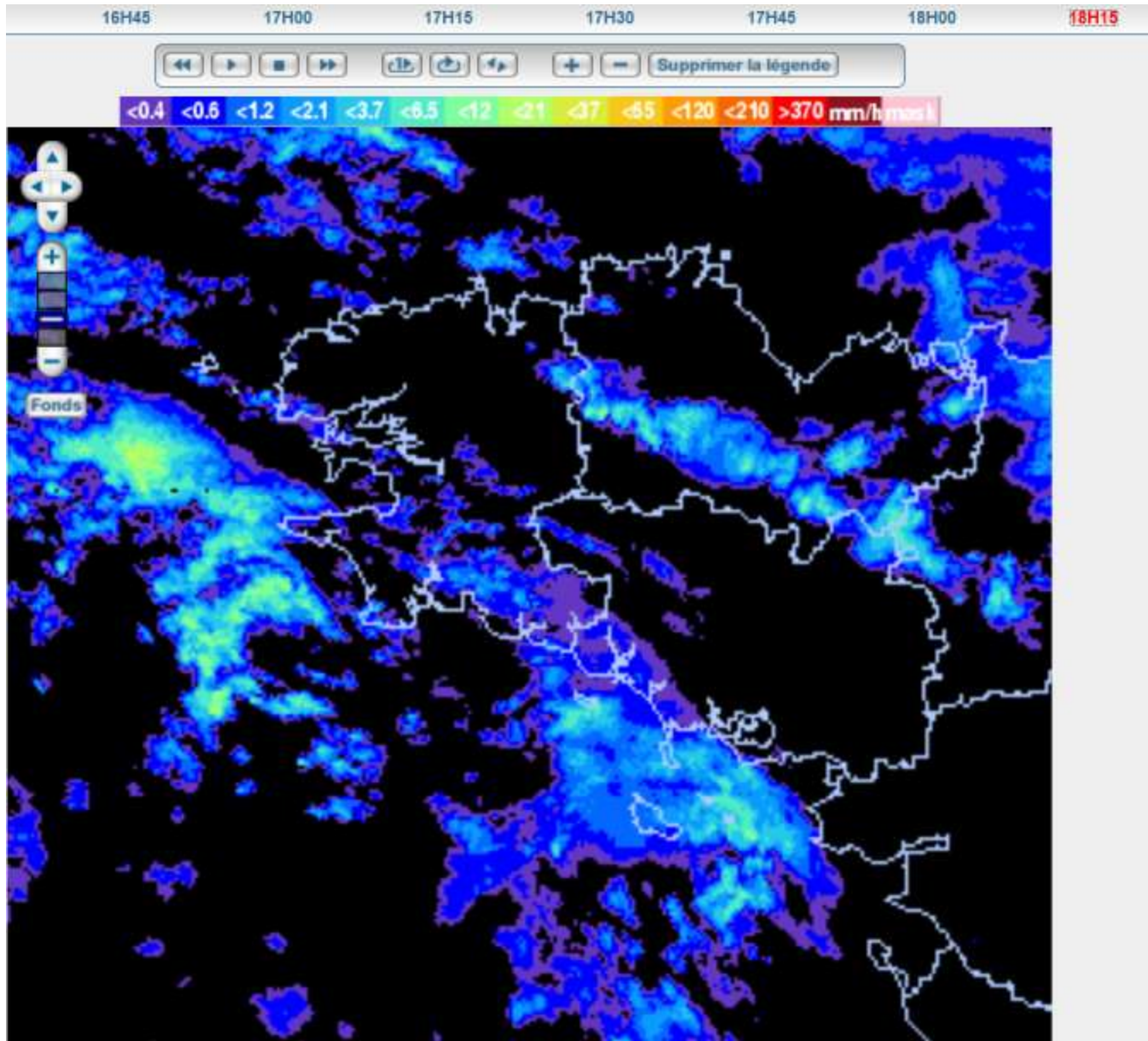












16H45

17H00

17H15

17H30

17H45

18H00

18H15

18H30

Navigation and control buttons: back, forward, stop, refresh, zoom in (+), zoom out (-), and a button labeled "Supprimer la légende".

Legend for precipitation intensity in mm/hours: <0.4, <0.6, <1.2, <2.1, <3.7, <6.5, <12, <21, <37, <65, <120, <210, >370

